

April 1, 2016

Ms. Samantha Hackett, Chairperson  
West Coast Multiplex Society  
Box 304  
Tofino, BC  
V0R 2Z0

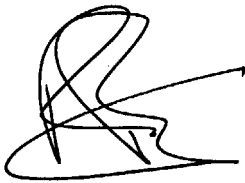
Dear Samantha,

**Re: West Coast Multiplex Facility – Confirmation of Location**

At the December 11, 2015 Alberni-Clayoquot Regional District Board of Directors meeting a resolution was passed confirming the location of the proposed multiplex facility at the Long Beach Airport.

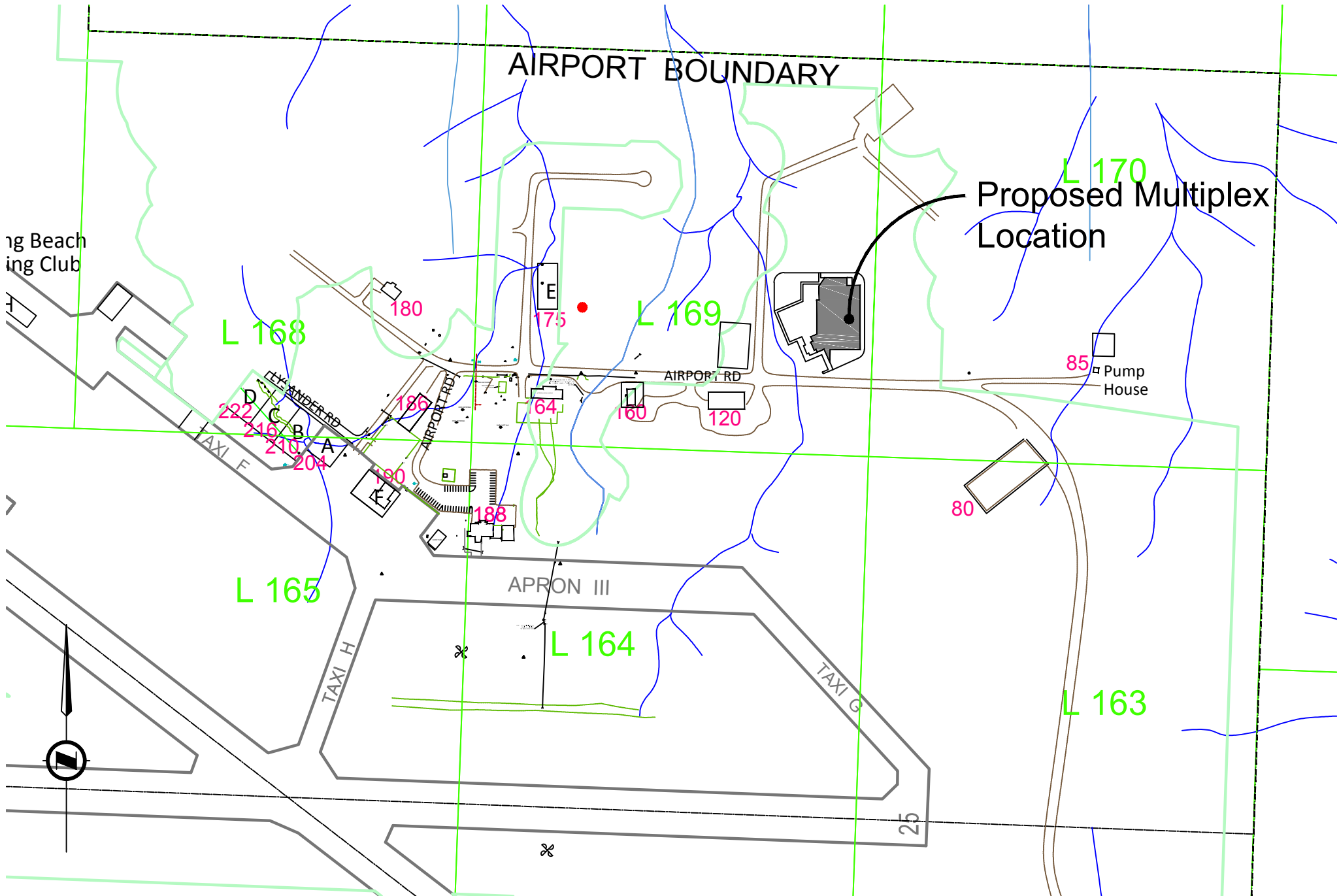
Following various geotechnical reports, the location defined on the attached map has been determined to be the most suitable for the proposed facility. Please accept this letter as confirmation that the Alberni-Clayoquot Regional District will make this location available for the multiplex facility should your Society be successful in securing 100% of the capital costs for construction.

Yours truly,



Russell Dyson,  
Chief Administrative Officer

Attachment



Long Beach Golf Club

AIRPORT BOUNDARY

L 170  
Proposed Multiplex Location

L 168

L 169

TAXI A  
TAXI B  
TAXI C  
TAXI D  
TAXI E  
TAXI F

AIRPORT RD

85 Pump House

L 165

APRON III

L 164

TAXI H

TAXI G

L 163

25